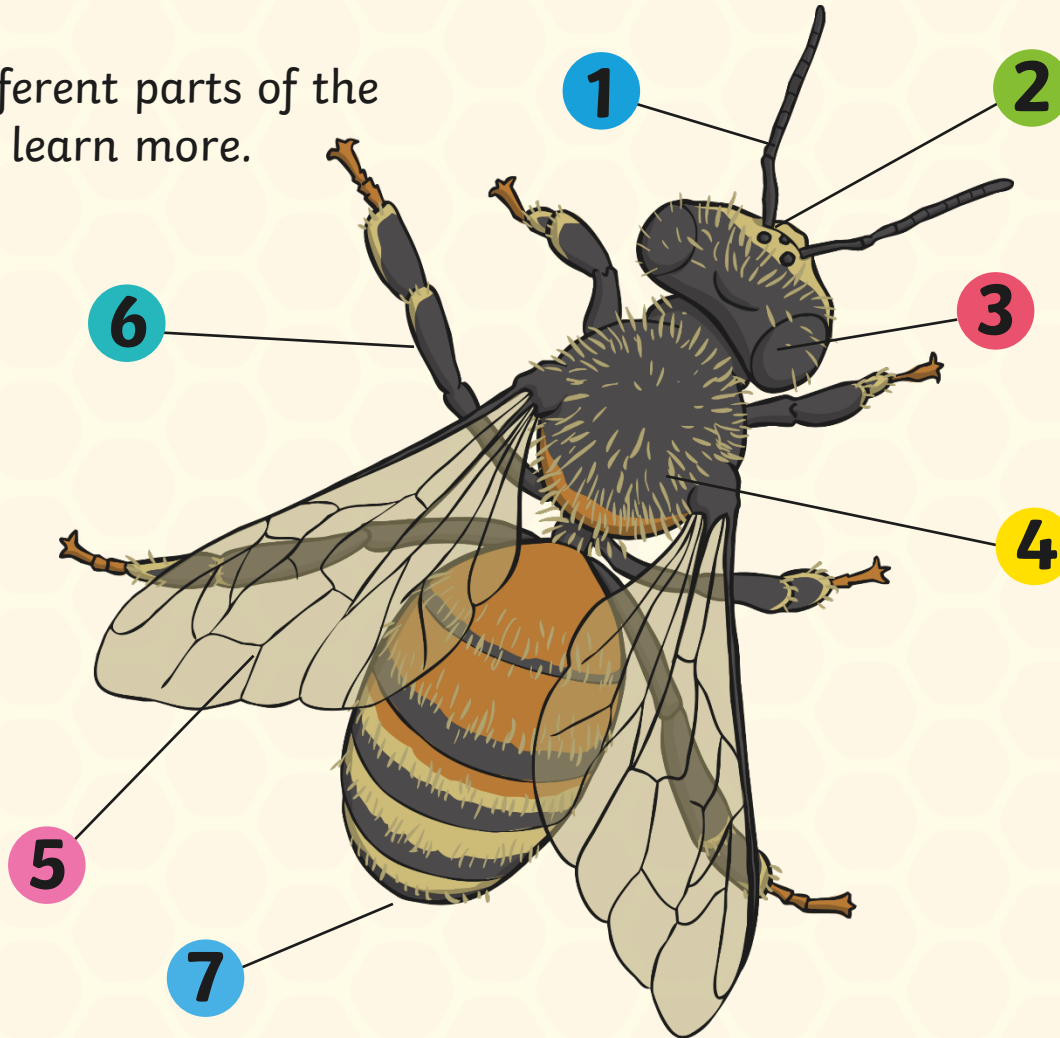


# Honeybees



# Honeybees

Click the different parts of the honeybee to learn more.



Next slide

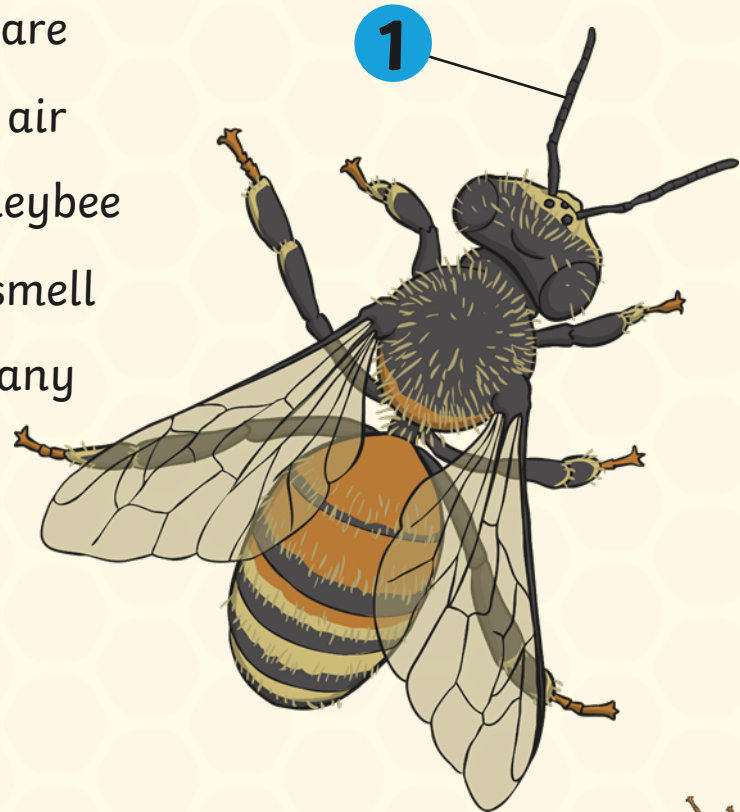
# The Honeybee's Antennae

A honeybee has two antennae which are bent. They are very sensitive and feel air and temperature which helps the honeybee land safely. They can also taste and smell with the antennae. Can you think of any other insects that have antennae?



Watch this video to learn more about a honeybee's antennae.

Please check the content in this link, including any comments, is suitable for your educational environment before showing. Please do not let the next video automatically play at the end of the clip. Twinkl accepts no responsibility for the content of third party websites.



Back to Honeybee





# The Honeybee's Mandible

The honeybee's mandible (mouth) is too small to bite humans. But if another insect try to get into the bee hive, the Bees bite is dangerous towards those insects.

Honeybee's also use their mandibles (mouth) to drink and eat.

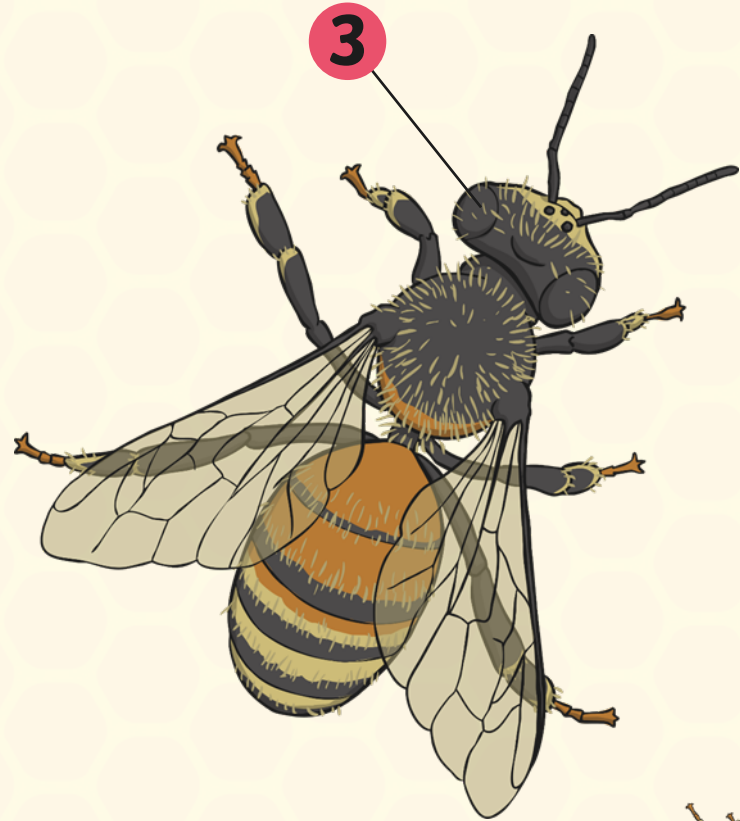


Back to Honeybee

# The Eye Of The Honeybee

A honeybee has five eyes. It has two large eyes. These large eyes allow the bee to see things move. Honeybees do not see the same colours as we do. They can't see red.

A honeybee has three other eyes. They are in a triangle shape on the bee's head. They can't see images but they can see light and dark.

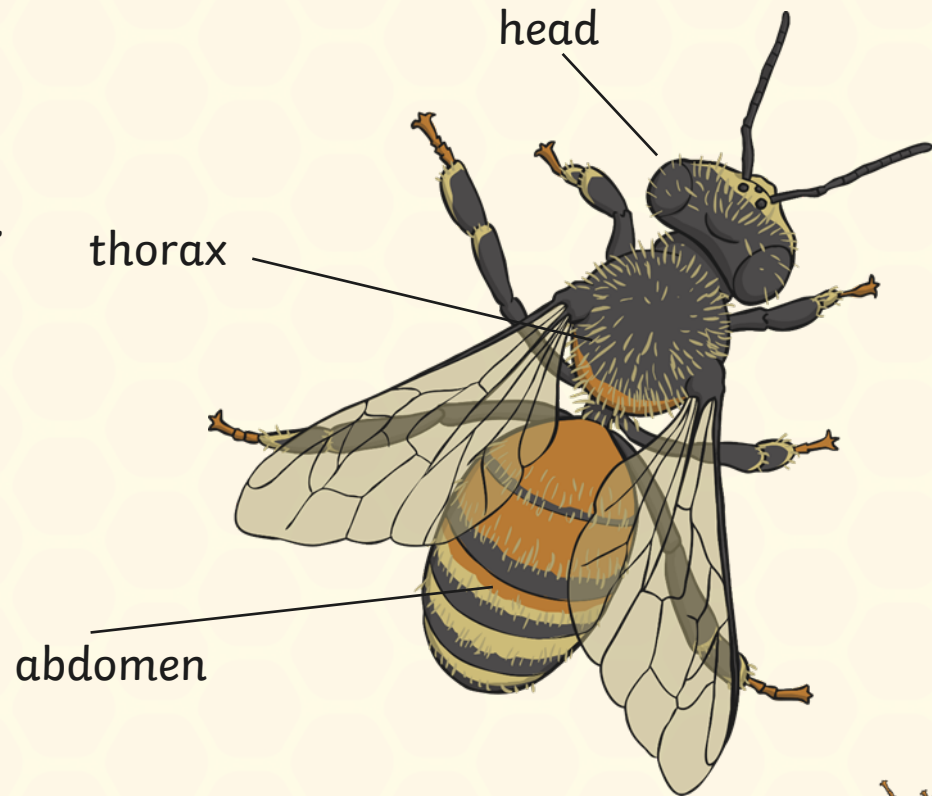


[Back to Honeybee](#)



# The Honeybee's Body Parts

The honeybee has three different body sections: the head, thorax and abdomen.

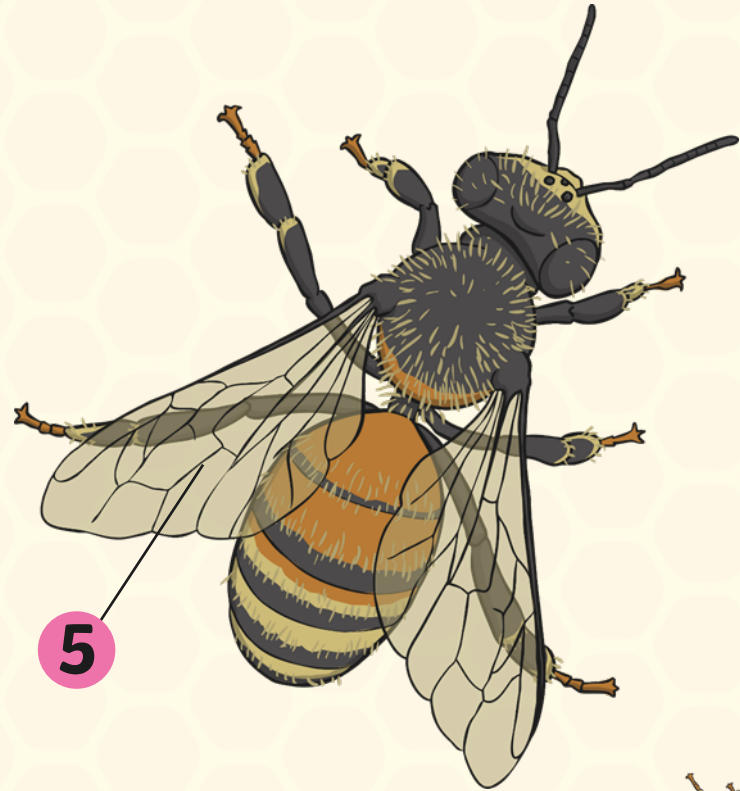


Back to Honeybee



# The Honeybee's Wings

The honeybee has two pairs of transparent (see through) wing. Honeybee's flap their wings very fast, it is almost impossible to see the wings flapping while the bee hovers or flies.



Back to Honeybee





# The Honeybee's Legs

Honeybees have 6 legs. The hindlegs (back legs) have pollen baskets on them that the bees stuffs full of pollen to take back to the hive. The baskets are transparent (see through) so when you look at a bee you can see the yellow and orange pollen inside the baskets.

The honeybee uses its front legs to keep its antennae nice and clean.



Back to Honeybee





# The Honeybee's Sting

A honeybee would never try to sting a human. It only uses its sting if it feels endangered. A honeybee is the only kind of bee with a hooked stinger. This means that it can only sting once and the sting stays behind in the creature that they have stung. Unfortunately, when a honeybee stings part of it's body is still connected to the sting, which means that the honeybee dies. This is why honeybees only sting if they feel they are in a lot of danger and to protect the hive.

If you are ever stung, make sure you scrape the sting out and do not squeeze the venom sack connected to the sting.



Back to Honeybee



# How Do Honeybees Make Honey?



Please see the class page for a video.

